

Instructions for Installing AusLCI Database



Step 1 - download the file and restore it

The download location is always on the lifecycles.com.au website - under Software > Life Cycle Strategies Databases and Tools section.

<http://www.lifecycles.com.au/auslci-database>

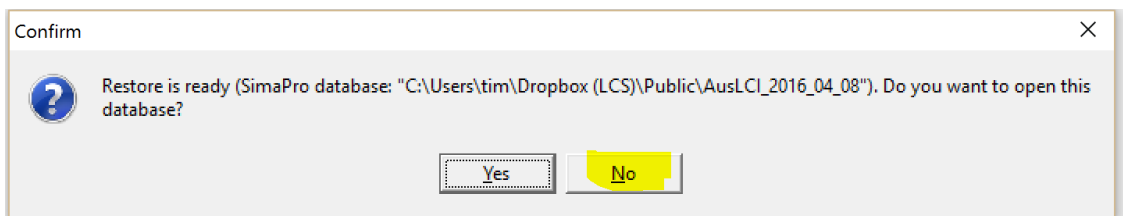
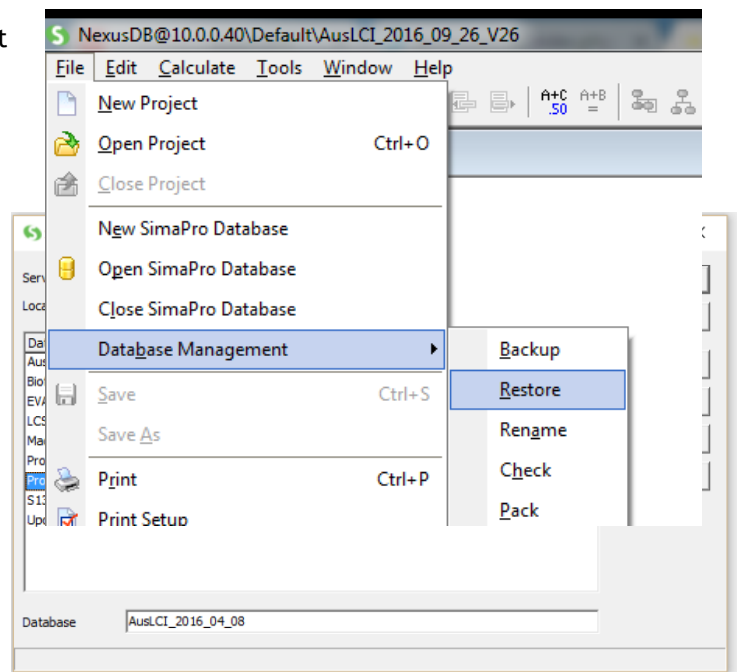
Save the file on your desktop or somewhere easy to remember. Don't save it into your Simapro database directory as this will stop it being able to unpack to that directory. Also don't save to a USB stick or external drive - as this will restrict or slow down the unpacking.

To unpack this file - open SimaPro and select menu item File > Database management > Restore. Select the backup file from your where you downloaded the file.

When the restore dialogue opens select the location - you default location will normally appear and this is fine to use, then press save.

Be careful not to click on one of your existing library names shown inside the dialogue, and this will make the restored file overwrite your file.

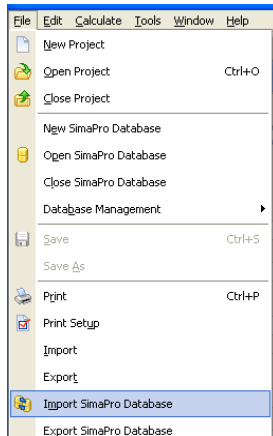
When the database is restored - don't open it¹, you want to open your main database which contains you other libraries and projects.



¹ If you do open it, its fine, just close it again.

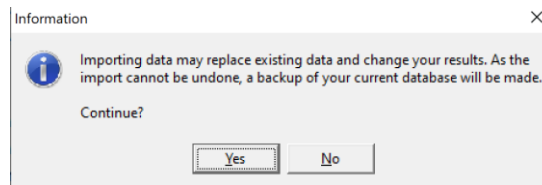
Step 2 - Import AusLCI data into your main database data

Open your existing database (usually “Professional” or something you renamed the database to).

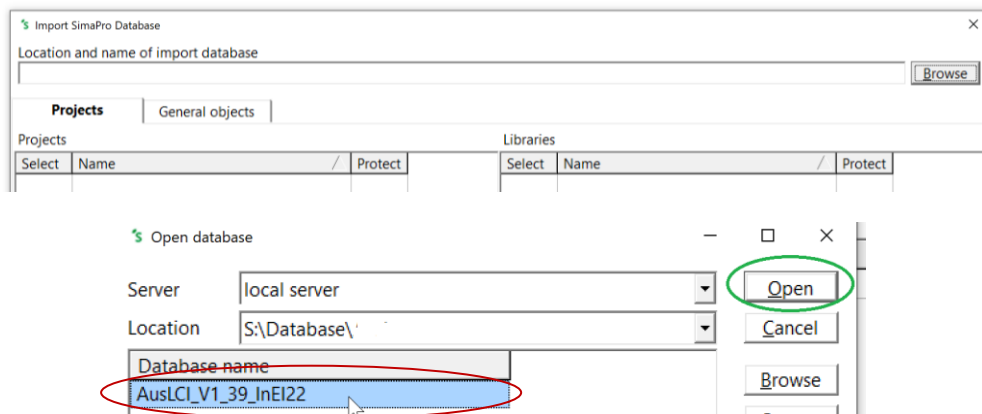


Next go to menu **File > Import SmaPro Database.**

You will get a scary message about how this will replace existing data and change results as shown below. Select **Yes**



Browse Select the database to be imported AusLCI202X_XXX XX (with the date of the AusLCI release) and press open.



Select the two AusLCI libraries to import by clicking in the checkboxes. Also check the delete empty subcategories check box. This will help clean up redundant subcategories in the SimaPro library as these have been changed as the database has been updated.

Import SimaPro Database

Location and name of import database
S:\Database\AusLCI\AusLCI_V1_39_InEI22 Browse

Projects | General objects

Projects			Libraries		
Select	Name	Protect	Select	Name	Protect
<input checked="" type="checkbox"/>	AusLCI System Processes		<input checked="" type="checkbox"/>	AusLCI System Processes	
			<input checked="" type="checkbox"/>	AusLCI Unit Processes	

Only include library-items used in selector
 Delete empty process categories

Select All Import Close

Click the import button. SimaPro will undertake a series of checks.

After a series of checks in which you are asked to accept replacements, the library should import.

If there is import errors email lifesupport@lifecycles.com.au or call lifecycles on 03 9417 1190.